

Image overview



March 2017

Press release

Alfa Laval FCM One Low-Flashpoint Fuel (LFF) booster systems have been a clear success on methanol-fuelled tankers with ME-LGI engines. Now Alfa Laval is supporting MAN Diesel & Turbo as the engine series is further developed to work with LPG.

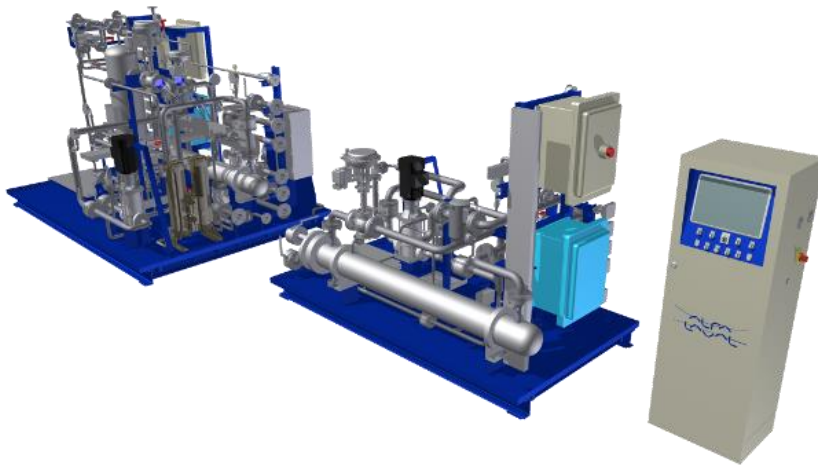


Image name

Alfa Laval FCM One LFF - Methanol



Caption

Roberto Comelli, Business Manager, Fuel Conditioning Systems, Alfa Laval

Contact:

Anja Simonsson

Vice President Communication

Alfa Laval Marine Division

Phone: +46 708 53 89 27

E-mail: anja.simonsson@alfalaval.com

www.alfalaval.com/marine