



# Deckhouse for Alfa Laval PureBallast 3 Ex

## Deckhouse solution for tankers



Alfa Laval has developed standard deckhouses to fit Alfa Laval PureBallast 3 Ex ballast water treatment systems. Each deckhouse is delivered as a pre-assembled solution, including the PureBallast 3 Ex system and all piping inside the deckhouse, for easy integration into the vessel.

For PureBallast 3 Ex system details, please refer to the Alfa Laval PureBallast 3 product leaflet.

### Application

A large portion of the world's tanker fleet uses submersible pumps, e.g. Framo pumps or the equivalent, to eliminate the need for a pump room and maximize space for the transport of product. This poses challenges when installing a ballast water treatment system, as it means there is no internal space available. A deckhouse for PureBallast 3 Ex offers a solution when the pump room is lacking or offers too little space for the installation.

### Benefits

- Pre-assembled PureBallast 3 Ex system in standardized deckhouse
- Durable construction with marine-approved steel (Grade A with 3.2 certificates)
- Climate regulation through integrated HVAC

- DNV-GL type approval covering both deckhouse and treatment system
- Possibility to transport the deckhouse in a pallet-wide high cube container (40'/20'/10')
- Full backing from Alfa Laval's global service organization

### Configuration

The flow-related components of the PureBallast 3 Ex system (UV reactor, filter and CIP unit) are contained within the deckhouse, while the lamp drive cabinet and control cabinet are installed outside the deckhouse and within the vessel's safe zone.

### Safety classification

All components and wiring inside the deckhouse are classified for use in hazardous areas in accordance with the IEC 60079 series of standards:

- Zone 1
- Explosion group IIC
- Temperature class T4 (135°)

### Type approval

The standard deckhouse configuration, including the PureBallast 3 Ex system, is type approved by DNV-GL.

## Deckhouse construction

### Side, front and aft:

8 mm coated steel, Grade A with 3.2 certificates

### Top and bottom:

5 mm coated steel, Grade A with 3.2 certificates

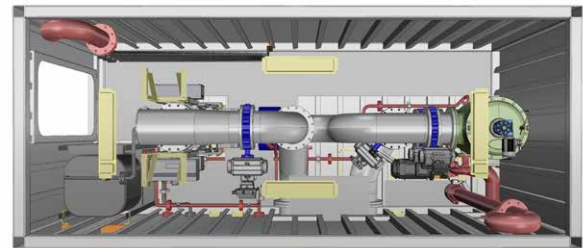
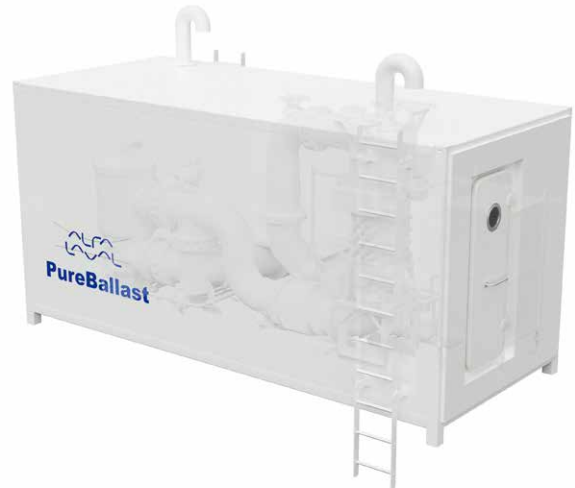
### Insulation:

50 mm, walls and ceiling

## Scope

The standard deckhouse scope of supply includes the following:

- **Deckhouse HVAC**
  - Electrically driven ventilation fan
  - Heater
- **Exterior lighting**
  - Waterproof, seawater-resistant marine-type lamps
- **Interior lighting**
  - 230 V fluorescent lamps with Ex approval
  - 24 V emergency lights integrated into the standard lamp units
- **Fire detection installation**
  - System of heat and smoke detectors installed within the deckhouse in a single zone
  - Connection to the vessel's fire detection system
- **Alarm system**
  - General vessel alarm siren installed in deckhouse
  - Digital output for the vessel



System in deckhouse	Dimensions (mm) (L x W x H)	Weight (kg) excluding PureBallast 3
PureBallast 3 Ex 2000/1500	7867 x 2305 x 2565	± 13000
PureBallast 3 Ex 1000/750/600/500	5467 x 2305 x 2565	± 10000
PureBallast 3 Ex 300/250	2750 x 2300 x 2260	± 5500

Alfa Laval reserves the right to change specifications without prior notification.

## How to contact Alfa Laval

Up-to-date Alfa Laval contact details for all countries are always available on our website at [www.alfalaval.com](http://www.alfalaval.com).