



Alfa Laval Touch Control

The new standard of control for marine boilers



! A revolution is

Intuitive two-touch navigation

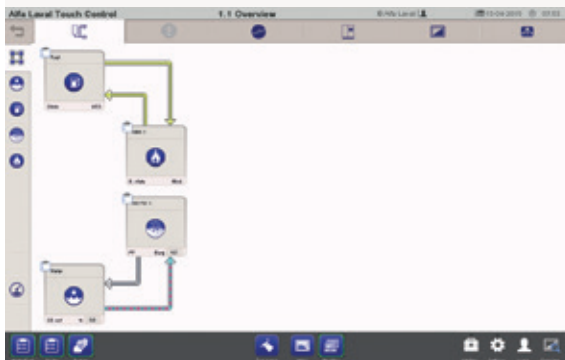
Alfa Laval Touch Control is the new standard of control for marine boilers – and a major leap forward in ease of use. With its intuitive graphical interface, any function or setting can be reached in two touches of the screen. That makes it quick and simple to master, even for inexperienced operators.

Easy boiler operation

Intuitive control means easier and better boiler operation. The full overview of the plant and easy access to all functions enable faster, smarter decisions that optimize boiler use. User-defined trend pages and integrated manuals are a further help, while user limits can be set to protect key functions.

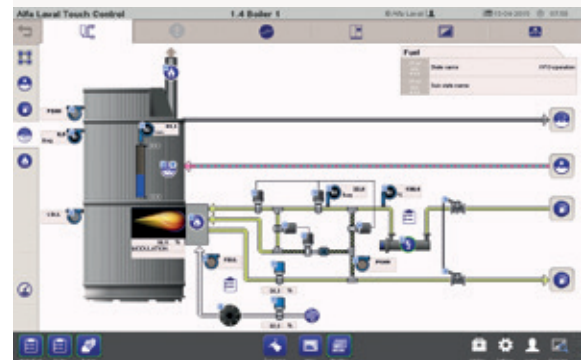
Plant overview

Already from the first screen, operators have a simple but complete overview of the boiler plant and its status. Tiles for each system – boiler, burner, fuel supply and water supply – show the system status, with coloured arrows showing the flow between them. Active systems are indicated by a green outline, making it easy to see which are in use.



System overview

In most situations, experienced operators will choose the system view. This is the main running screen, which offers a detailed overview of all processes in the chosen system. Valve positions, flows and key operating parameters are shown in context, while a simple table provides other valuable information, such as the fuel in use.



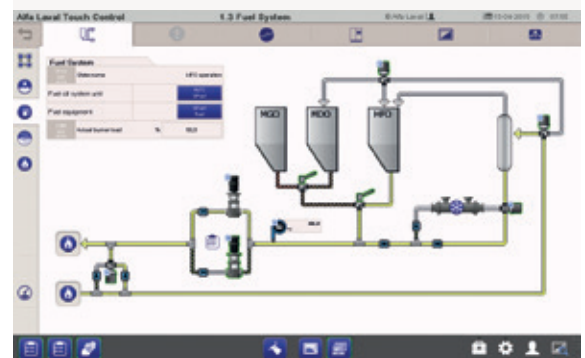
Pop-up faceplate

Touching a component in the system view brings up a pop-up window or faceplate. From the faceplate, operators can start or stop the chosen component, as well as access and adjust its operating parameters. Alarms, hour counters and other useful information can be found in the faceplate as well.



Pipe and valve status

The status of pipes and valves is indicated visually in the system view, making it easy to see at a glance. Colours show the type of fluid in each pipe, while arrows indicate the direction of flow. Within each valve, a line shows the channels that are currently open.



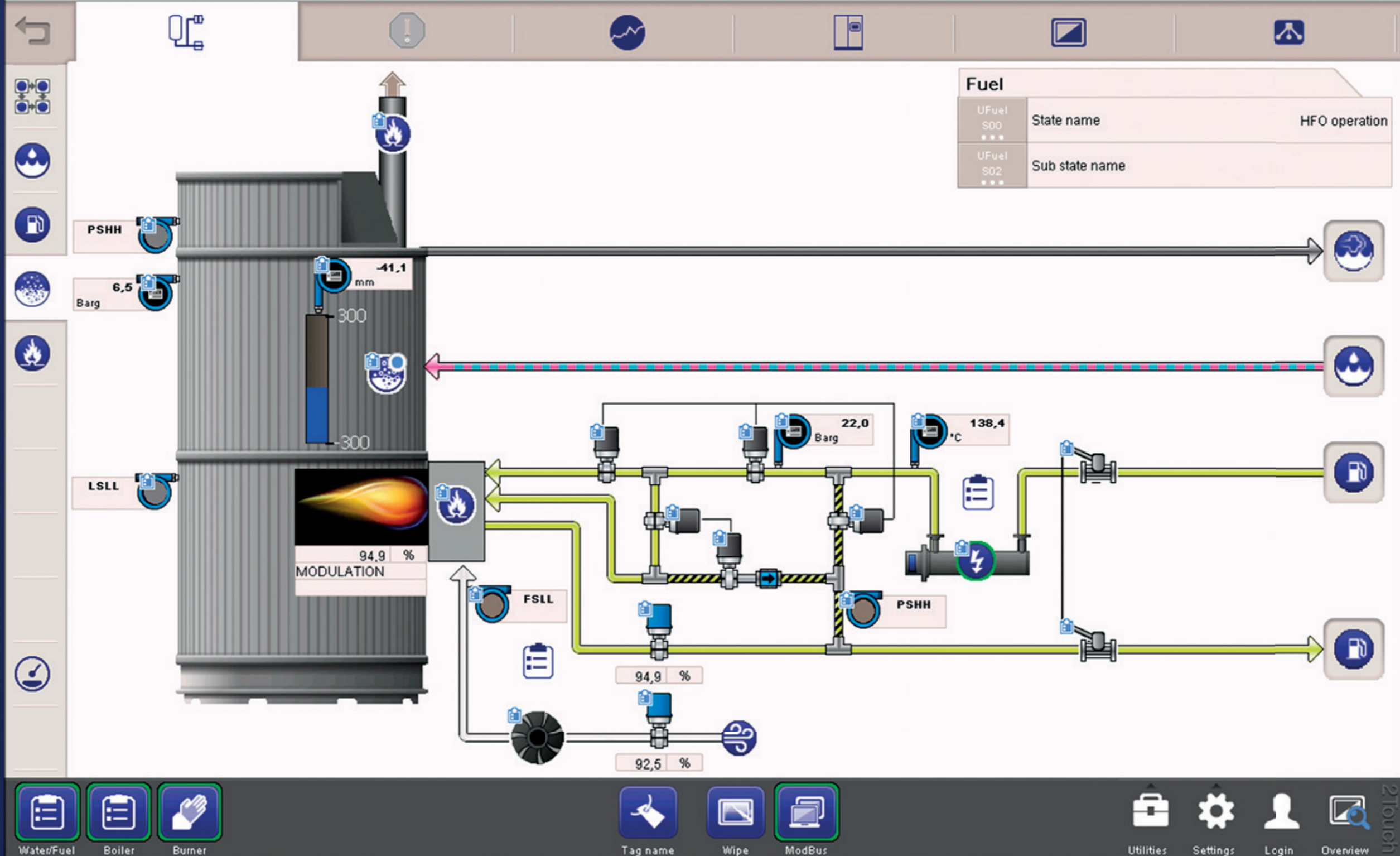


Alfa Laval Touch Control

1.4 Boiler 1

© Alfa Laval

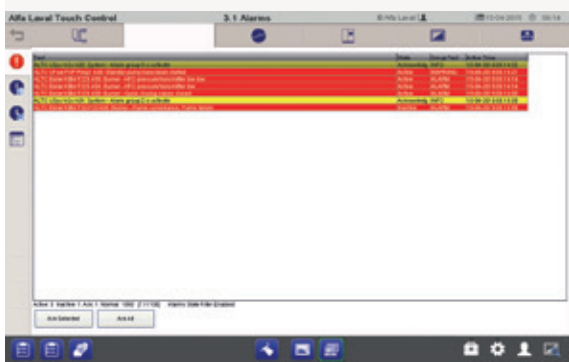
15-04-2015 07:58



ALFA
LAVAL

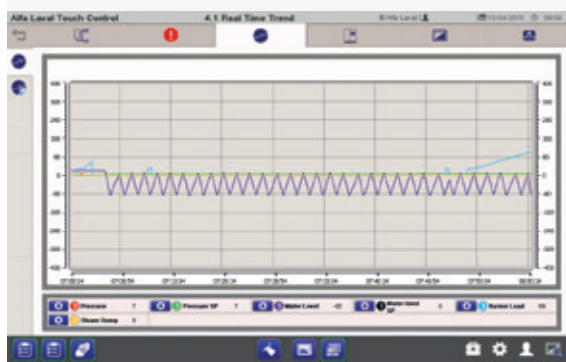
Alarm view

To ensure fast actions and easy troubleshooting, alarms for the whole boiler plant are gathered in a single alarm view. Here the operator can see and acknowledge active alarms, or view histories of alarms and operator actions. Individual warnings can be blocked, for example for troubleshooting purposes.



Trend view

Through real-time and historical trending, operators can interpret the plant's operation and optimize its use over time. Using the trend view, they can easily see trends for one parameter or many. Touching the screen lets them add or subtract parameters in the faceplate that appears.



Communication and settings

Alfa Laval Touch Control is a PLC-based system. It can be connected to other control and communications systems via bus, e.g. Modbus RTU and Modbus TCP/IP, or via hardwired interface. A control view shows operators the PLC and communication parameters, with options for backing up and restoring the system settings.



Quick and simple retrofit

Alfa Laval Touch Control is the standard for new Alfa Laval Aalborg boiler plants. In addition, it can be installed as a control system replacement on a growing range of existing plants. The replacement procedure is fast, straightforward and performed by skilled Alfa Laval Service Engineers either in port or at sea.



at your fingertips

Robust PLC-based design

Alfa Laval Touch Control is based on a programmable logic controller (PLC) for high durability and flexibility. Backup of system settings is easy, hardware redundancy options are available, and parts are simple to acquire and replace. Thanks to coverage for all major bus interfaces, connection to other vessel systems is straightforward.

Future-proof expansion

Alfa Laval Touch Control will be the common platform for Alfa Laval Aalborg boilers, which means crews will find a familiar interface regardless of boiler type. Built with Alfa Laval technology and already used with other Alfa Laval products, it is proven and ready for the future. Modular construction and upgradable firmware create possibilities for integrating new features and meeting tomorrow's needs.

Advanced
boiler control
with a simple
touch



Alfa Laval in brief

Alfa Laval is a leading global provider of specialized products and engineered solutions.

Our equipment, systems and services are dedicated to helping customers to optimize the performance of their processes. Time and time again.

We help our customers to heat, cool, separate and transport products such as oil, water, chemicals, beverages, foodstuffs, starch and pharmaceuticals.

Our worldwide organization works closely with customers in almost 100 countries to help them stay ahead.

How to contact Alfa Laval

Up-to-date Alfa Laval contact details for all countries are always available on our website at www.alfalaval.com

