

Located in Aalborg, Denmark, the Alfa Laval Test & Training Centre is the closest thing on land to the machinery room of a full-sized commercial vessel. Here equipment and applications can be tested on the scale of an oceangoing ship – but with the control and convenience that cannot exist at sea.

The testing space of 250 m² is a spring-board for faster, more effective R&D. Tests are conducted under actual operating conditions, using a large 2 MW marine diesel engine and seawater from the Limfjord, a body of water connecting the Kattegat Strait with the North Sea. The centre incorporates the broad range of Alfa Laval equipment and solutions, which are organized into major process lines: fuel line, steam line, exhaust line and ballast line.

The equipment is overseen by a unified control system, which is steered from a dedicated control room. In addition, the centre features a well-equipped learning complex, where visitors who come to observe new technologies can also receive training in their use.

For more information, please visit www.alfalaval.com/marine



Alfa Laval
Test & Training
Centre



Alfa Laval in brief

Alfa Laval is a leading global provider of specialized products and engineering solutions.

Our equipment, systems and services are dedicated to helping customers to optimize the performance of their processes. Time and time again.

We help our customers to heat, cool, separate and transport products such as oil, water, chemicals, beverages, foodstuffs, starch and pharmaceuticals.

Our worldwide organization works closely with customers in almost 100 countries to help them stay ahead.

How to contact Alfa Laval

Contact details for all countries are continually updated on our web site. Please visit www.alfalaval.com to access the information.



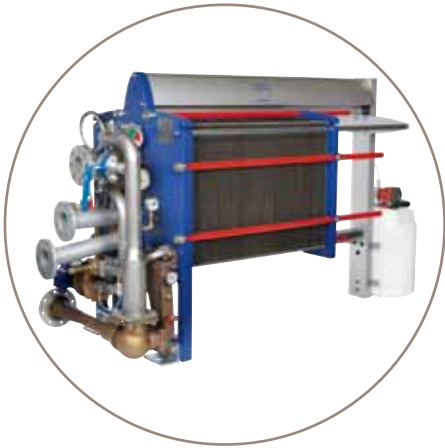


Sea possibilities – explore reality

The Alfa Laval Test & Training Centre



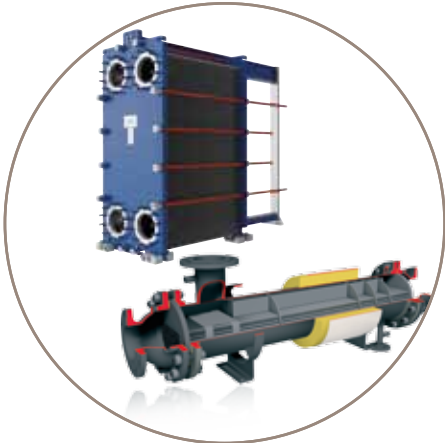
Innovation in full scale



AQUA Blue
Freshwater generation



PureVent
Crankcase gas cleaning



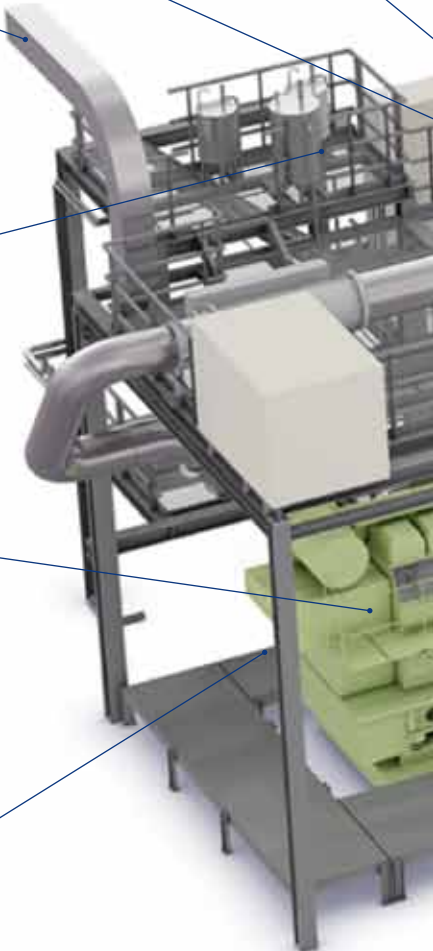
Heat exchangers
General heating
Scrubber cooling
Water cooling
Steam dump condensing
Oil preheating



MAN engine
(L28/32, 9 cylinders)

Eliminator (Combined Cleaning Unit)
Lube oil filtration

Air outlet



Alfa Laval

Test & Training Centre



FCM One

Fuel conditioning system for diesel engines

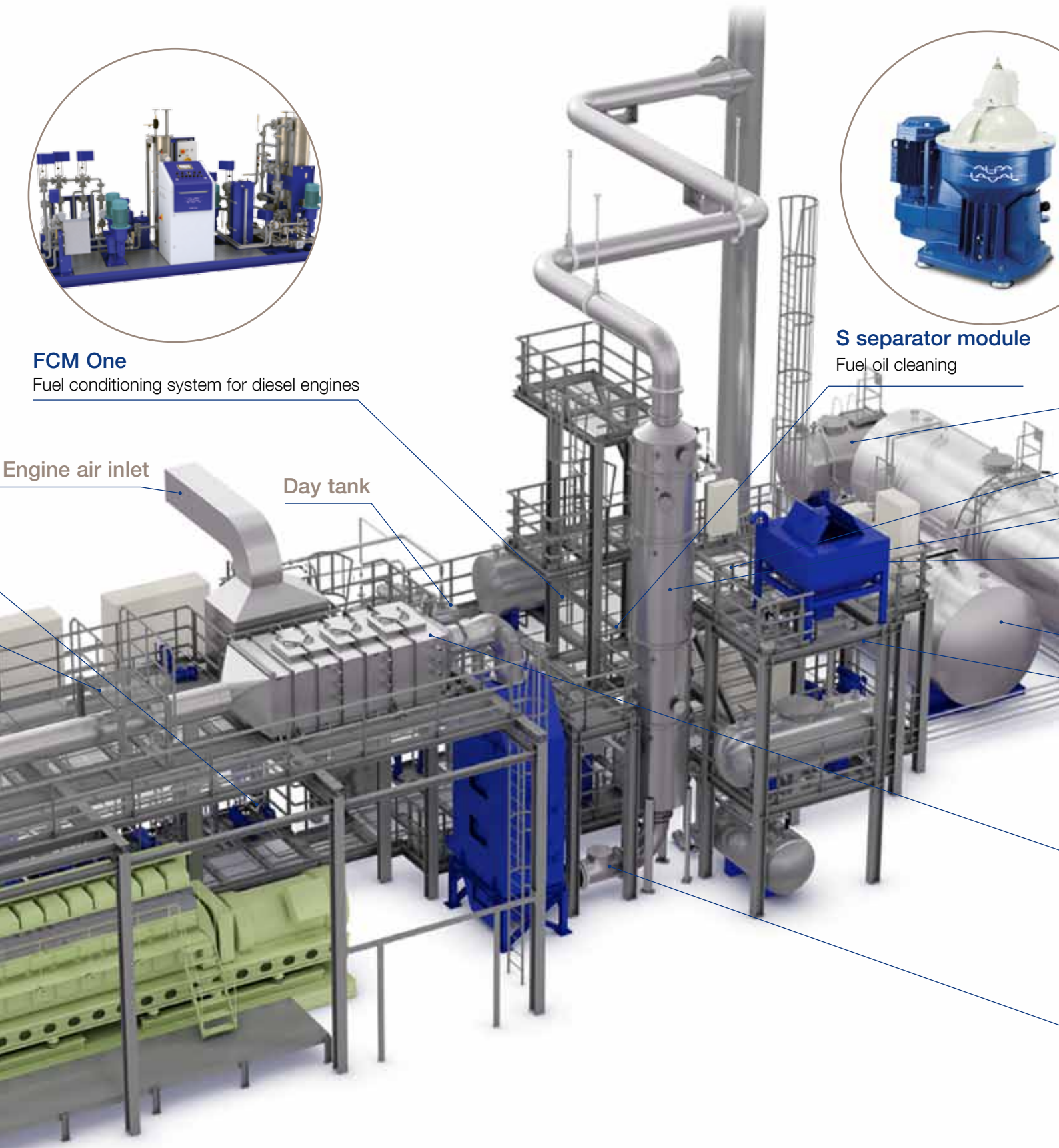


S separator module

Fuel oil cleaning

Engine air inlet

Day tank





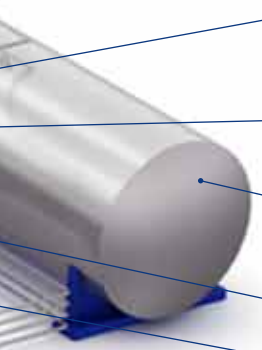
Diesel tank



Gunclean Toftejorg i40 S/D
Cargo tank cleaning



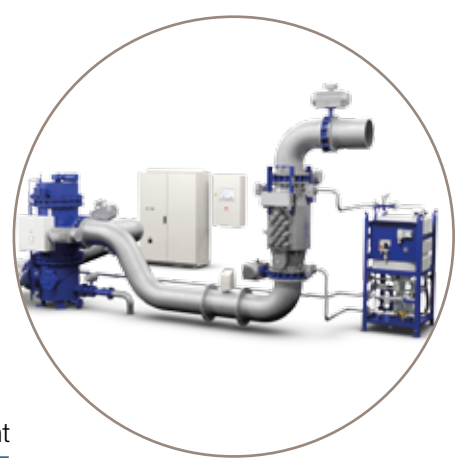
PureSO_x
Exhaust gas cleaning (SO_x)



Scrubber dosing tank
Exhaust gas cleaning (SO_x)

HFO tank

Wastewater tank



PureBallast 3.0
Ballast water treatment

Haldor Topsøe SCR unit
Exhaust gas cleaning (NO_x)



Exhaust gas boiler
Waste heat recovery
with drum and deaerator