



Instruction Manual

Alfa Laval Instrument Programmer



TE91K042EN1

ESE03333EN

Date of issue: August, 2016

First published: August, 2016

1.	EC Declaration of conformity	3
2.	Safety	4
	2.1. Important information	4
	2.2. Warning signs.....	4
3.	General description	5
	3.1. Alfa Laval Instrument Programmer	5
	3.2. General description	5
	3.3. Technical data	6
	3.4. The Alfa Laval Instrument Programmer kit	6
4.	Installation	7
	4.1 Installation of Alfa Laval Instrument Programmer PC software	7
	4.2 Changing of battery of the Alfa Laval Instrument Programmer.....	7
	4.3 Alfa Laval Instrument Programmer menu.....	7
	4.4 Downloading Alfa Laval Instrument Programmer and Firmware	8
	4.5 Installation and update of the Alfa Laval Instrument Programmer software	8
	4.6 Update Alfa Laval Instrument Programmer and instrument Firmware	8
	4.7 Update the Alfa Laval Instrument Programmer Firmware.....	9
	4.8 Updating of instrument Firmware	10
5.	General information	11
	5.1 Service / Repair.....	11
	5.2 Warranty	11
	5.3 How to contact Alfa Laval Kolding A/S.....	11

1. EC Declaration of Conformity

EC Declaration of Conformity

The designated company

Alfa Laval Kolding A/S

Company name

Albuen 31, 6000 Kolding, Denmark

Address

+45 79 32 22 00

Phone no.

hereby declare that

Instrument

Designation

Alfa Laval Instrument Programmer

Type

From serial numbers from 2016-00001 to 2030-99999

is in conformity with the provisions of the Directive 2004/108/EU and with the national implementing legalization and EC regulation 1935/2004 relating to materials and articles intended to come into contact with food

and furthermore declares that the following (parts/clauses of) applicable directives have been used:

- Directive 2006/95/EC on low voltage
- EMC: EN61000-6-3:2007
- EN61000-6-2:2005

The person authorised to compile the technical file is the signer of this document.

Global Product Quality Manager Pumps,
Valves, Fittings and Tank Equipment

Title

Lars Kruse Andersen

Name



Signature

May 30, 2016

Date

Kolding

Place



2. Safety

Unsafe practices and other important information are emphasized in this manual.

Warnings are emphasized by means of special signs. All warnings in the manual are summarized on this page.

Pay special attention to the instructions below so that severe personal injury or damage to the transmitter is avoided.

2.1 Important information

Always read the manual before using the conductivity transmitter

WARNING

Indicates that special procedures must be followed to avoid severe personal injury.

CAUTION

Indicates that special procedures must be followed to avoid damage to the conductivity transmitter

NOTE

Indicates important information to simplify or clarify procedures

2.2 Warning signs

General warning:



Dangeous electrical voltage:



Caustic agents:



3. General Description

Unsafe practices and other important information are emphasized in this manual.

Warnings are emphasized by means of special signs. All warnings in the manual are summarized on this page.

Pay special attention to the instructions below so that severe personal injury or damage to the transmitter is avoided.

3.1 Alfa Laval Instrument Programmer Unit

Item number for the Alfa Laval Instrument Programmer Unit: 9614448501

The Alfa Laval Instrument Programmer can be operated from a PC, supplied from the USB port, or remote operation, supplied from a battery. It is with user-friendly software with help menus.

Configures the following products:

TE67G - Temperature transmitter

TE67K - Conductivity transmitter

TE67L - Pressure transmitter

TE67O - Level switch

3.2 General description

The Alfa Laval Instrument Programmer is the dedicated configuring tool for all the above listed Alfa Laval products. The Alfa Laval Instrument Programmer unit is operated and supplied from a standard PC with a USB connector. A unique feature is that the Alfa Laval Instrument Programmer can be disconnected from the PC and brought to the remote site for monitoring and re-configuration of the Alfa Laval instrument. In this case the Alfa Laval Instrument Programmer is powered by the internal battery. The integrated LC-display enables the user to monitor the actual configuration of a product for control purposes.

The software is based on the FDT-container technology where each product has a DTM based software driver. The stand alone all-in-one software package named Alfa Laval Instrument Programmer with integrated help menus is easily installed and operated. In case a customer prefers to use an FDT-container software all the DTM's can be run by this software.

The selected configuration can be stored under a file name determined by the user. A print function is available for hard copy records. The »measure« function in the Alfa Laval Instrument Programmer makes it easy for the user to monitor events in a test circuit.

3. Technical Data

3.3 Working principle of the temperature transmitter

Supply voltage

Internal battery	NiMH 2,4 V, 450 mAh
External	Supply and battery charge from USB

Data transfer

Data input	USB
Firmware	Updated from home page

EMC data

Immunity	EN 61326
Emission	EN 61326

Environmental conditions

Operating temperature	0...50°C
Humidity	< 90% RH, non-condensing
Protection class	IP 42
Approval	Configuration of Ex-products outside zone 0,1 or 2
Conformity	To EU-directives, RoHS, VEEE

3.4 The Alfa Laval Instrument Programmer

Alfa Laval Instrument Programmer

Cable with 2 alligator clips
Cable from Alfa Laval Instrument Programmer to M12 Plug for TE670
USB cable
CD with the Alfa Laval Instrument Programmer software

4.1 Installation of Alfa Laval Instrument Programmer

WARNING!

Do not connect the Alfa Laval Instrument Programmer to your PC before the installation of the Alfa Laval Instrument Programmer software.

- 1) Quit all programs and insert the CD.
 - a) The CD will start an automatic installation.
 - b) If your autorun function has been disabled the installation should be done manually.
Select the "Alfa Laval Instrument Programmer_Package" folder on the CD and run the .exe-file.
- 2) During installation you will be prompted for
 - a) User rights for the software
 - b) Folder name for the Alfa Laval Instrument Programmer installation.
- 3) After the installation the Alfa Laval Instrument Programmer will start automatically



4.2 Changing of battery of the Alfa Laval Instrument Programmer

- 1) Connect the Alfa Laval Instrument Programmer to your PC to ensure that the battery will be recharged.
- 2) The battery will be discharged if the Alfa Laval Instrument Programmer is not connected to a PC for some time.
- 3) It takes up to 16 hours to fully charge the Alfa Laval Instrument Programmer .
- 4) When receiving the Alfa Laval Instrument Programmer it may be necessary to charge it before use.



Note:


The Alfa Laval Instrument Programmer will not function if discharged even though the Alfa Laval Instrument Programmer is connected to the USB port on the PC. The device still uses power from the battery and not directly from the PC.


4.3 Alfa Laval Instrument Programmer menu

Press  and  simultaneously to enter the Alfa Laval Instrument Programmer menu.



The Alfa Laval Instrument Programmer menu contains e.g. Teach-In and Autozero functionalities.

Press  or  to browse the menu

Press  to access current menu point

Press  to return to previous menu

Reset

Press  and  simultaneously for 5 seconds to reset the Alfa Laval Instrument Programmer

4. Installation

4.4 Downloading Alfa Laval Instrument Programmer and Firmware

Downloading of the Alfa Laval Instrument Programmer PC software and various instrument firmware can be done from the Alfa Laval home page.

ALFA LAVAL INSTRUMENT PROGRAMMER:

www.alfalaval.com/products/fluid-handling/instrumentation/instrumentation-accessories

Click on the desired download in the “Language” box.

Download and save the file on your PC in a selected directory e.g. on your desktop.

If it is a ZIP-file, please unzip the downloaded file to a selected directory, e.g. on your desktop.

4.5 Installation and update of the Alfa Laval Instrument Programmer software

Open the file with the downloaded, unzipped file, click on the “Alfa Laval Instrument Programmer software package B... exe” and follow the instructions and the Alfa Laval Instrument Programmer will automatically be installed on your PC.

The Basic Alfa Laval Instrument Programmer Package includes drivers for the Alfa Laval Instrument Programmer and all the instruments, that are programmable with this software. A new version will automatically overwrite older versions and you are able to work with the new version as soon as it is installed.

4.6 Installation and update of the Alfa Laval Instrument Programmer software

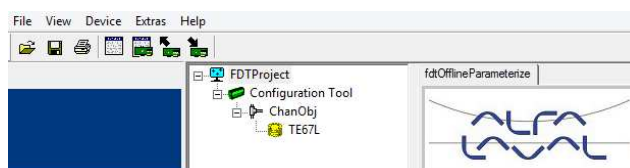
Connect the instrument to the Alfa Laval Instrument Programmer and the Alfa Laval Instrument Programmer to your PC.

Choose the relevant instrument from the list to the left.

Press “View” and click on “Project window”

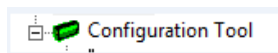


A project tree appears



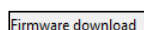
4.7 Updating the Alfa Laval Instrument Programmer firmware

Right click on



and this selection box will appear

Click on




and this window will appear



Press



and the hardware and software version number will be shown. If your software version has a lower version number than the newest version of the Alfa Laval Instrument Programmer firmware, please update the Alfa Laval Instrument Programmer .



Note: In case the software is corrupt and shows an error message please close and reopen the Alfa Laval Instrument Programmer
Skip the step  and go directly to Firmware download.

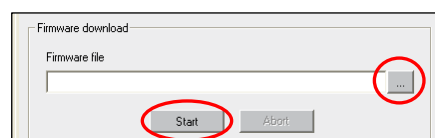
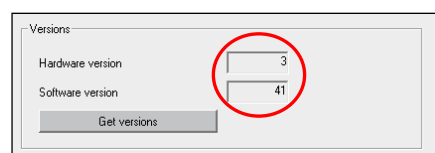
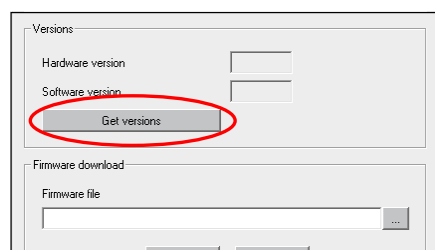
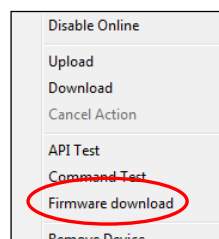
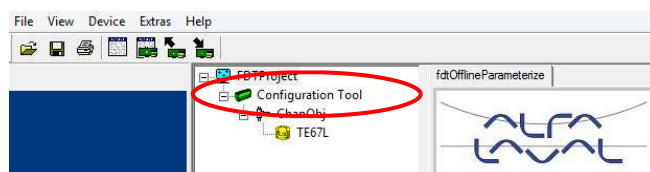
Firmware download

Press  and find and select the unzipped file (.txt file) in your directory and then press 

Update will now take place.

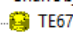
It may take several minutes before the update is completed.

After finishing the update of the Alfa Laval Instrument Programmer please press   simultaneously for 5 seconds on the Alfa Laval Instrument Programmer to complete the installation.




4. Installation

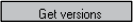
4.8 Updating of instrument firmware

Right click on the connected instrument e.g.  TE67L

and this selection box will appear


Click on 

and this window will appear

Press 



and the version number will be displayed.

If your software version has a lower version number than the newest version of the instrument firmware, please update the instrument.

Note: In case the software is corrupt and shows an error message please close and reopen the Alfa Laval Instrument Program 

Skip the step and go directly to Firmware download.

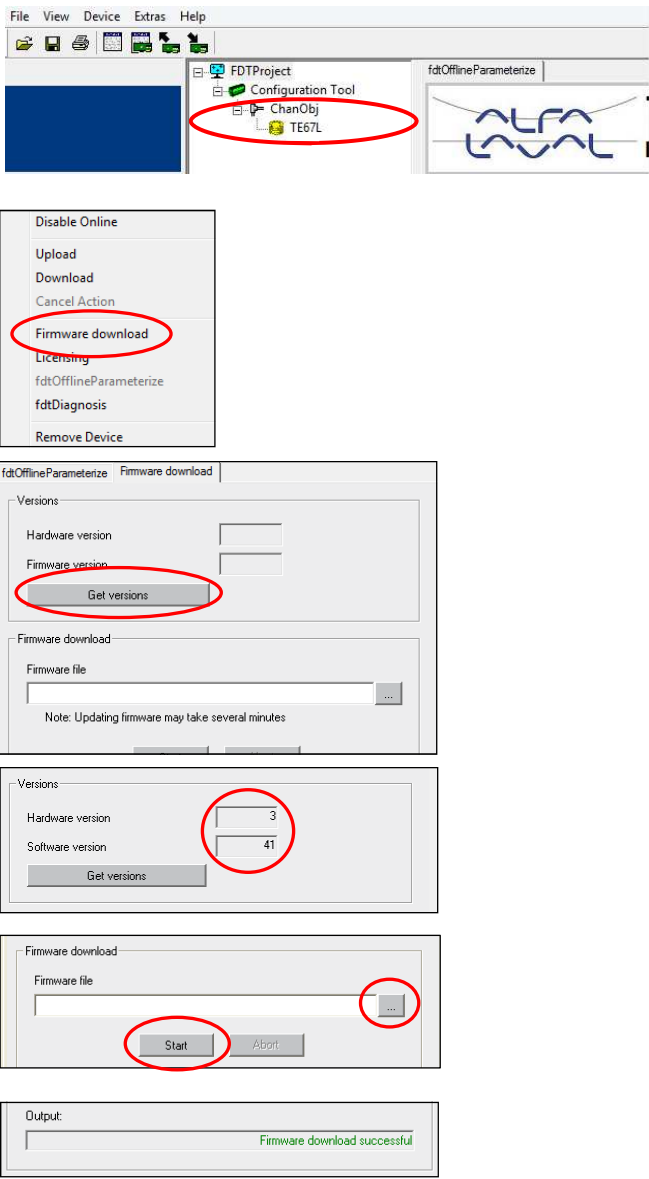
Firmware download

Press  and find and select the unzipped file (.txt file) in your directory and then press 

Update will now take place.

It may take several minutes before the update is completed.

When the update of the instrument firmware has been finished successfully the text to the right will be displayed.



5. General information

5.1 Service / Repair

The product contains no direct replaceable parts, except for the batteries. In case of malfunction the product must be sent to Alfa Laval for repair.

Upon every return of a product, no matter if for modifications or repair, it is necessary to contact your local Alfa Laval office to guarantee a quick execution of your request.

You will receive instructions regarding the return procedure from your local Alfa Laval office. Be sure to follow the instructions closely.

5.2 Warranty

The warranty conditions are subject to the legal warranty period of **12 months** from the date of delivery. In case of improper use, modifications of or damages to the device, we do not accept warranty claims.

Damaged devices will also not be accepted. Furthermore, defects due to normal wear are not subject to warranty services.

5.3 How to contact Alfa Laval Tank Equipment A/S

For further information please feel free to contact:

Alfa Laval Tank Equipment

Alfa Laval Kolding A/S

31, Albuen - DK 6000 Kolding - Denmark

Registration number: 30938011

Tel switchboard: +45 79 32 22 00 - Fax switchboard: +45 79 32 25 80

www.toftejorg.com , www.alfalaval.dk - info.dk@alfalaval.com

Contact details for all countries are continually updated on our websites.

How to contact Alfa Laval

Contact details for all countries are continually updated on our website.

Please visit www.alfalaval.com to access the information direct.

© Alfa Laval Corporate AB

This document and its contents is owned by Alfa Laval Corporate AB and protected by laws governing intellectual property and thereto related rights. It is the responsibility of the user of this document to comply with all applicable intellectual property laws. Without limiting any rights related to this document, no part of this document may be copied, reproduced or transmitted in any form or by any means (electronic, mechanical, photocopying, recording or otherwise) or for any purpose, without the expressed permission of Alfa Laval Corporate AB. Alfa Laval Corporate AB will enforce its rights related to this document to the fullest extend of the law, including the seeking of criminal prosecution.

Sap: 11149023